

# Calculation and Selection Result

## Project 1: Project1

### Project Information

|              |          |                |             |
|--------------|----------|----------------|-------------|
| Project name | Project1 | Project ref    | Project1_V1 |
| Country      |          | Date           | 2024-7-12   |
| City         |          | Client address |             |
| Altitude(m)  | 0        | Client name    |             |

### Equipment List

| Model       | Description                          | Quantity |
|-------------|--------------------------------------|----------|
| MKH2-500-R3 | 2-Pipe FCU/Air Return From Bottom H2 | 5        |

## FCU1

### Input Information

| General Data                   |                           |                   |                   |      |
|--------------------------------|---------------------------|-------------------|-------------------|------|
| Series                         | 2-Pipe FCU                | Electric heater   |                   | No   |
| Type                           | 2nd Ceiling&Floor         | Fan motor type    |                   | AC   |
| Product name                   | Air Return From Bottom H2 | Fan speed         |                   | High |
| Design according to            | Cooling mode Heating mode | Air flow          | m <sup>3</sup> /h | /    |
| Pipe connection direction      | /                         | ESP               | Pa                | /    |
| Antifreeze type                | None                      | Cooling capacity  | kW                | /    |
| Air volume deviation limit (%) | /                         | Sensible capacity | kW                | /    |
| Capacity deviation limit (%)   | 20                        | Heating capacity  | kW                | 5    |

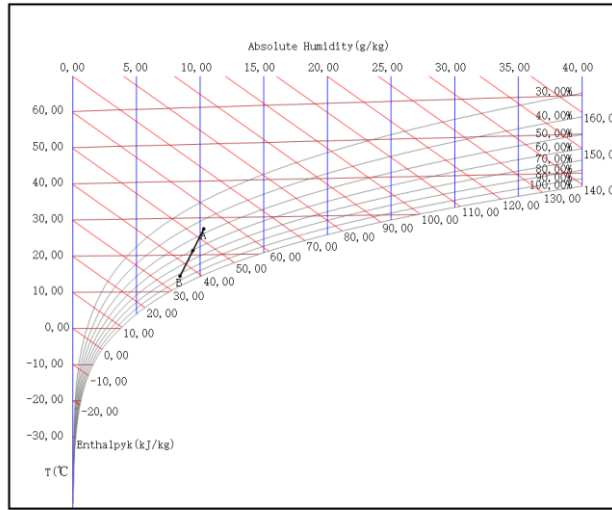
## Specifications MKH2-500-R3 (1)

| Unit model                |                   |              |                      |                   |         |
|---------------------------|-------------------|--------------|----------------------|-------------------|---------|
| MKH2-500-R3               |                   |              |                      |                   |         |
| Fan motor data            |                   |              |                      |                   |         |
| Type                      | 2nd Ceiling&Floor |              | Fan speed            |                   | High    |
| Quantity                  | 1                 |              | Air flow             | m <sup>3</sup> /h | 790     |
| Power supply              | 220-240/1/50      |              | ESP                  | Pa                | /       |
| Power input               | W                 | 91           | Rated current        | A                 | 0.4     |
| Cooling                   |                   |              |                      |                   |         |
| Inlet air temp (DB/WB)    | °C                | 27.0/19.0    | Total capacity       | kW                | 4.65    |
| Outlet air temp (DB/WB)   | °C                | 14.2/12.7    | Sensible capacity    | kW                | 3.58    |
| Inlet water temp          | °C                | 7.0          | Water flow           | m <sup>3</sup> /h | 0.80    |
| Outlet water temp         | °C                | 12.0         | Water pressure drop  | kPa               | 56.85   |
| Heating                   |                   |              |                      |                   |         |
| Inlet air temp (DB/WB)    | °C                | 20.0/15.0    | Heating capacity     | kW                | 5.20    |
| Outlet air temp (DB/WB)   | °C                | 39.3/21.4    | Water flow           | m <sup>3</sup> /h | 0.89    |
| Inlet water temp          | °C                | 45.0         | Water pressure drop  | kPa               | 56.68   |
| Outlet water temp         | °C                | 40.0         |                      |                   |         |
| Coil Data                 |                   |              | Water Pipe Diameter  |                   |         |
| Face area                 | m <sup>2</sup>    | 0.15         | Inlet pipe           | mm                | Gø19.1  |
| Tube diameter             | mm                | 7.94         | Outlet pipe          | mm                | Gø19.1  |
| Rows                      |                   | 3            | Drain pipe           | mm                | ODø18.5 |
| Body Dimensions           |                   |              | Panel Dimensions     |                   |         |
| Dimension (W*H*D)         | mm                | 495*200*1240 | Dimension (W*H*D)    | mm                | /       |
| Packing size (W*H*D)      | mm                | 595*300*1345 | Packing size (W*H*D) | mm                | /       |
| Net weight                | kg                | 25.50        | Net weight           | kg                | /       |
| Gross weight              | kg                | 32.00        | Gross weight         | kg                | /       |
| Sound Power Level Data    |                   |              | Electrical Heater    |                   |         |
| High/Medium/Low           | dB(A)             | 59/51/43     | Capacity             | kW                | /       |
| Sound Pressure Level Data |                   |              |                      |                   |         |
| High/Medium/Low           | dB(A)             | 59/51/43     |                      |                   |         |

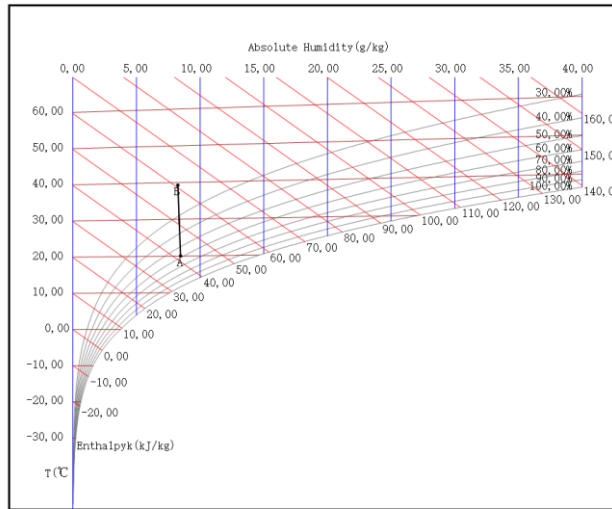
**Note:** Sound Power Level is tested in a reverberation chamber test room.

# Enthalpy-Humidity Chart

humidity chart of cooling



humidity chart of heating

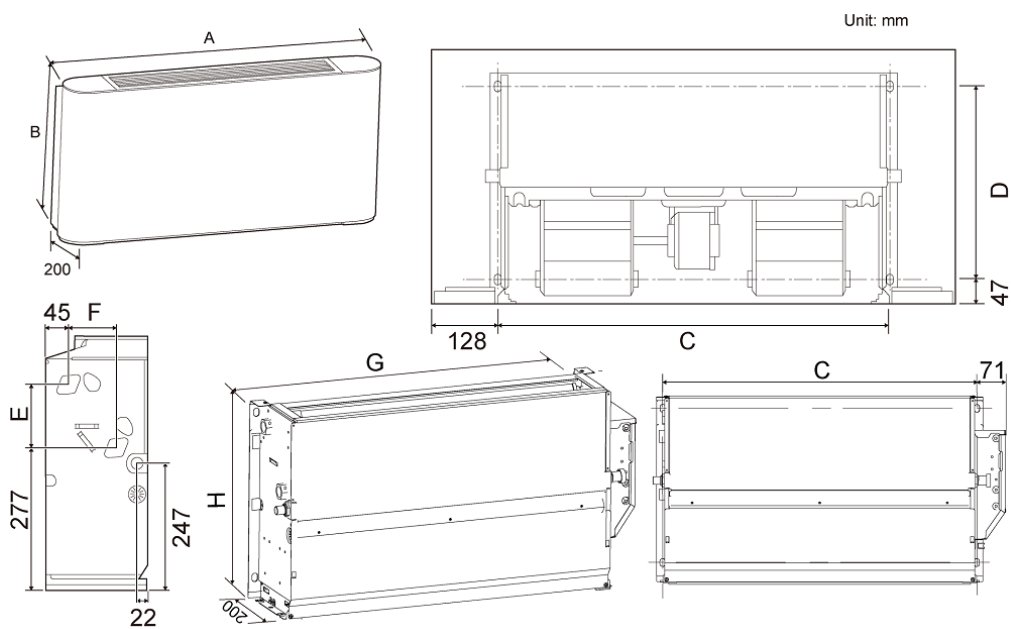


## Appearance



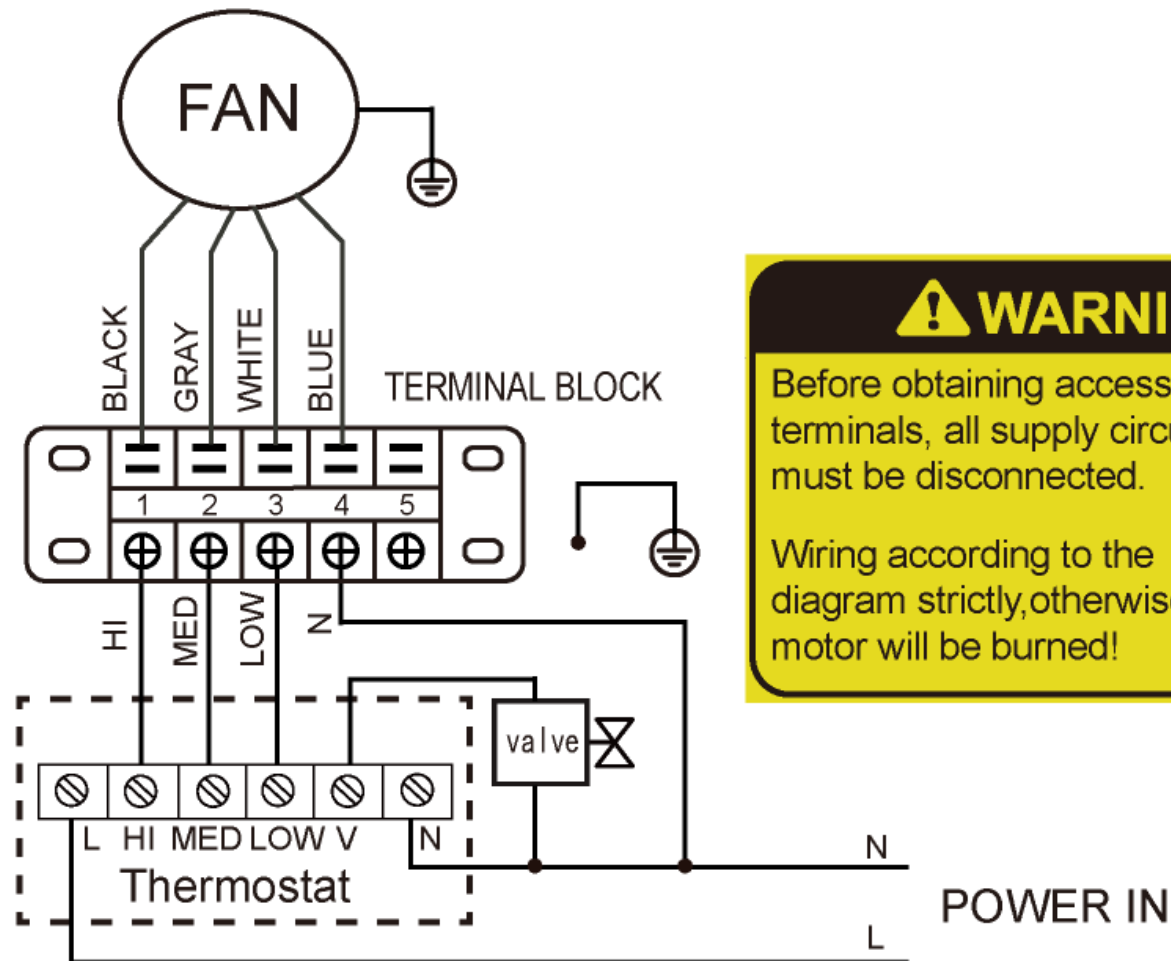
## Dimensions

(Unit: mm):MKH2-500-R3



| MODEL | MKH2-V150-R3(R4) | MKH2-V250-R3(R4) | MKH2-V350-R3(R4) | MKH2-V500-R3(R4) | MKH2-V700-R3(R4) | MKH2-V800-R3(R4) |
|-------|------------------|------------------|------------------|------------------|------------------|------------------|
| A     | 790              | 1020             | 1240             | 1240             | 1360             | 1360             |
| B     | 495              | 495              | 495              | 495              | 495              | 591              |
| C     | 534              | 764              | 984              | 984              | 1104             | 1104             |
| D     | 375              | 375              | 375              | 375              | 375              | 391              |
| E     | 123              | 123              | 123              | 123              | 123              | 219              |
| F     | 93               | 93               | 93               | 93               | 93               | 102              |
| G     | 628              | 858              | 1078             | 1078             | 1198             | 1198             |
| H     | 455              | 455              | 455              | 455              | 455              | 551              |

Wiring diagram



**! WARNING**

Before obtaining access to terminals, all supply circuits must be disconnected.

Wiring according to the diagram strictly, otherwise motor will be burned!

## FCU2

### Input Information

| General Data                   |                           |                   |                   |      |
|--------------------------------|---------------------------|-------------------|-------------------|------|
| Series                         | 2-Pipe FCU                | Electric heater   |                   | No   |
| Type                           | 2nd Ceiling&Floor         | Fan motor type    |                   | AC   |
| Product name                   | Air Return From Bottom H2 | Fan speed         |                   | High |
| Design according to            | Cooling mode Heating mode | Air flow          | m <sup>3</sup> /h | /    |
| Pipe connection direction      | /                         | ESP               | Pa                | /    |
| Antifreeze type                | None                      | Cooling capacity  | kW                | /    |
| Air volume deviation limit (%) | /                         | Sensible capacity | kW                | /    |
| Capacity deviation limit (%)   | 20                        | Heating capacity  | kW                | 5.5  |

## Specifications MKH2-500-R3 (1)

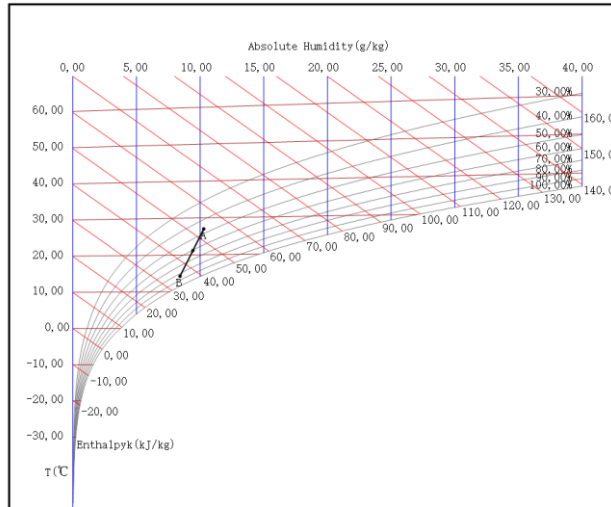
| Unit model                |                   |              |                      |                   |         |
|---------------------------|-------------------|--------------|----------------------|-------------------|---------|
| MKH2-500-R3               |                   |              |                      |                   |         |
| Fan motor data            |                   |              |                      |                   |         |
| Type                      | 2nd Ceiling&Floor |              | Fan speed            |                   | High    |
| Quantity                  | 1                 |              | Air flow             | m <sup>3</sup> /h | 790     |
| Power supply              | 220-240/1/50      |              | ESP                  | Pa                | /       |
| Power input               | W                 | 91           | Rated current        | A                 | 0.4     |
| Cooling                   |                   |              |                      |                   |         |
| Inlet air temp (DB/WB)    | °C                | 27.0/19.0    | Total capacity       | kW                | 4.65    |
| Outlet air temp (DB/WB)   | °C                | 14.2/12.7    | Sensible capacity    | kW                | 3.58    |
| Inlet water temp          | °C                | 7.0          | Water flow           | m <sup>3</sup> /h | 0.80    |
| Outlet water temp         | °C                | 12.0         | Water pressure drop  | kPa               | 56.85   |
| Heating                   |                   |              |                      |                   |         |
| Inlet air temp (DB/WB)    | °C                | 20.0/15.0    | Heating capacity     | kW                | 5.76    |
| Outlet air temp (DB/WB)   | °C                | 41.5/22.0    | Water flow           | m <sup>3</sup> /h | 0.50    |
| Inlet water temp          | °C                | 50.0         | Water pressure drop  | kPa               | 17.28   |
| Outlet water temp         | °C                | 40.0         |                      |                   |         |
| Coil Data                 |                   |              | Water Pipe Diameter  |                   |         |
| Face area                 | m <sup>2</sup>    | 0.15         | Inlet pipe           | mm                | Gø19.1  |
| Tube diameter             | mm                | 7.94         | Outlet pipe          | mm                | Gø19.1  |
| Rows                      |                   | 3            | Drain pipe           | mm                | ODø18.5 |
| Body Dimensions           |                   |              | Panel Dimensions     |                   |         |
| Dimension (W*H*D)         | mm                | 495*200*1240 | Dimension (W*H*D)    | mm                | /       |
| Packing size (W*H*D)      | mm                | 595*300*1345 | Packing size (W*H*D) | mm                | /       |
| Net weight                | kg                | 25.50        | Net weight           | kg                | /       |
| Gross weight              | kg                | 32.00        | Gross weight         | kg                | /       |
| Sound Power Level Data    |                   |              | Electrical Heater    |                   |         |
| High/Medium/Low           | dB(A)             | 59/51/43     | Capacity             | kW                | /       |
| Sound Pressure Level Data |                   |              |                      |                   |         |
| High/Medium/Low           | dB(A)             | 59/51/43     |                      |                   |         |

**Note:** Sound Power Level is tested in a reverberation chamber test room.

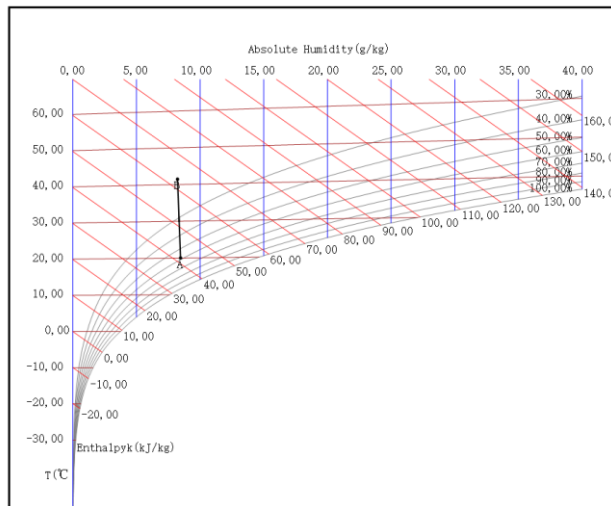


# Enthalpy-Humidity Chart

humidity chart of cooling



humidity chart of heating

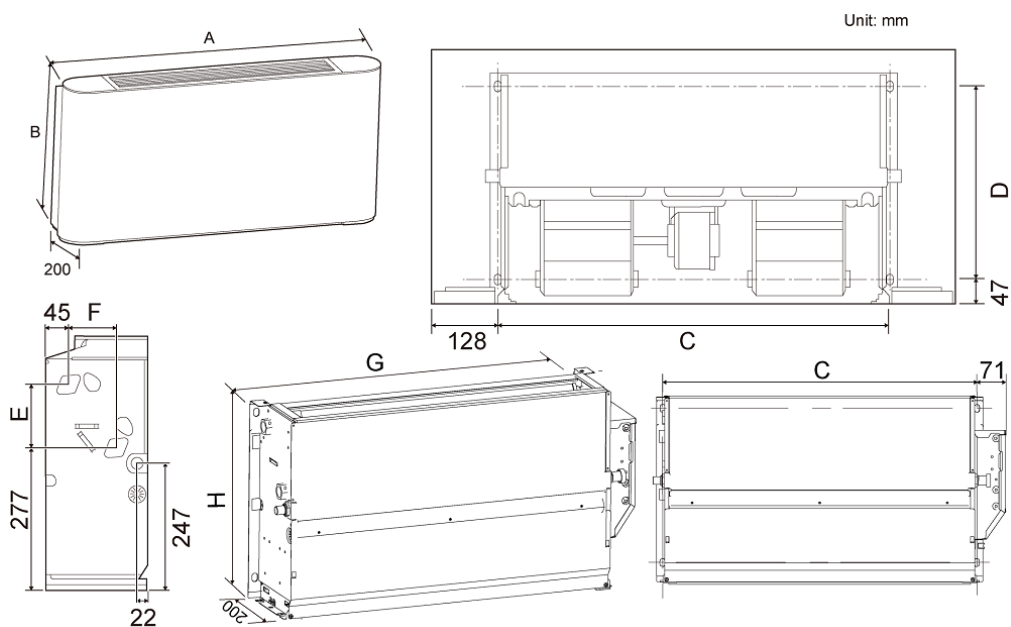


## Appearance



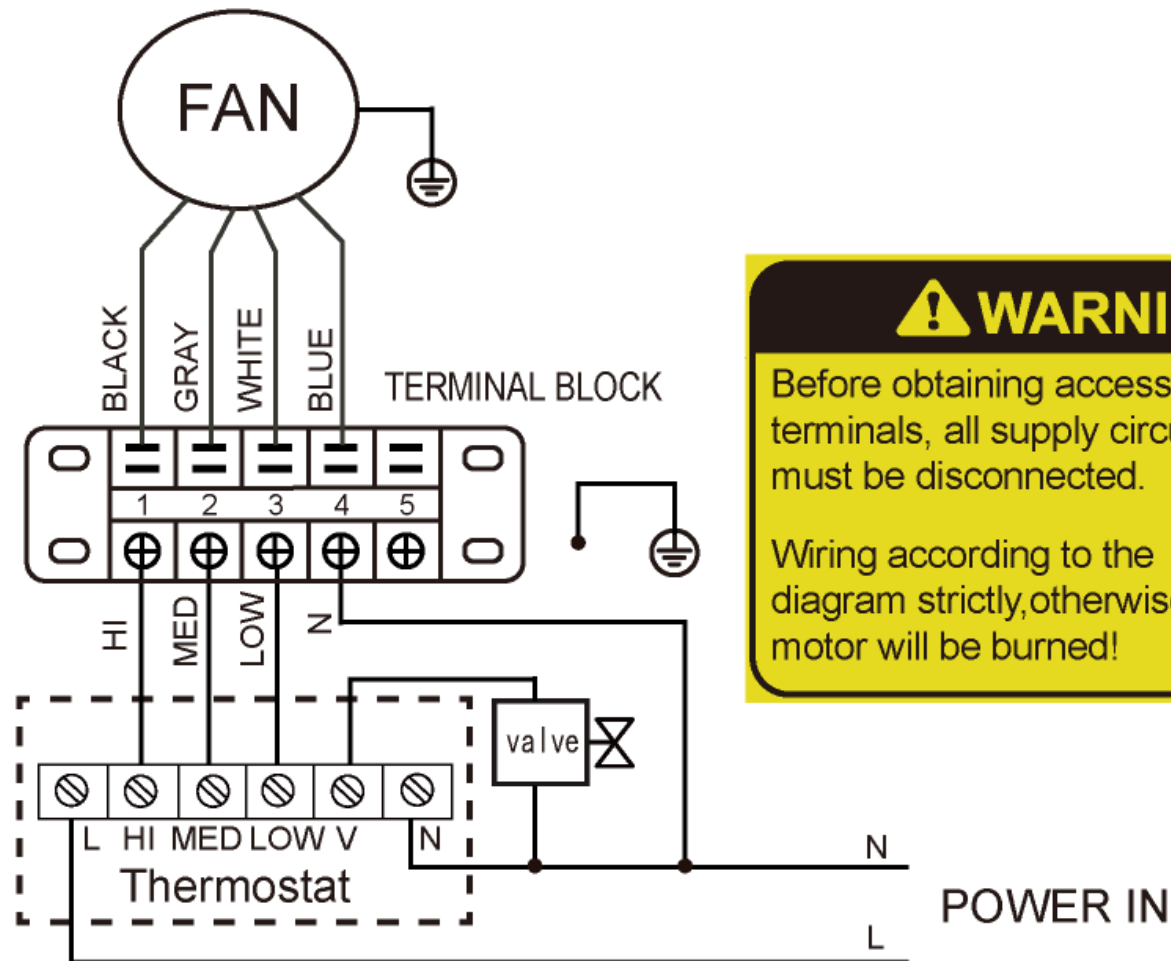
## Dimensions

(Unit: mm):MKH2-500-R3



| MODEL | MKH2-V150-R3(R4) | MKH2-V250-R3(R4) | MKH2-V350-R3(R4) | MKH2-V500-R3(R4) | MKH2-V700-R3(R4) | MKH2-V800-R3(R4) |
|-------|------------------|------------------|------------------|------------------|------------------|------------------|
| A     | 790              | 1020             | 1240             | 1240             | 1360             | 1360             |
| B     | 495              | 495              | 495              | 495              | 495              | 591              |
| C     | 534              | 764              | 984              | 984              | 1104             | 1104             |
| D     | 375              | 375              | 375              | 375              | 375              | 391              |
| E     | 123              | 123              | 123              | 123              | 123              | 219              |
| F     | 93               | 93               | 93               | 93               | 93               | 102              |
| G     | 628              | 858              | 1078             | 1078             | 1198             | 1198             |
| H     | 455              | 455              | 455              | 455              | 455              | 551              |

Wiring diagram



**! WARNING**

Before obtaining access to terminals, all supply circuits must be disconnected.

Wiring according to the diagram strictly, otherwise motor will be burned!

## FCU3

### Input Information

| General Data                   |                           |                   |                   |      |
|--------------------------------|---------------------------|-------------------|-------------------|------|
| Series                         | 2-Pipe FCU                | Electric heater   |                   | No   |
| Type                           | 2nd Ceiling&Floor         | Fan motor type    |                   | AC   |
| Product name                   | Air Return From Bottom H2 | Fan speed         |                   | High |
| Design according to            | Cooling mode Heating mode | Air flow          | m <sup>3</sup> /h | /    |
| Pipe connection direction      | /                         | ESP               | Pa                | /    |
| Antifreeze type                | None                      | Cooling capacity  | kW                | /    |
| Air volume deviation limit (%) | /                         | Sensible capacity | kW                | /    |
| Capacity deviation limit (%)   | 20                        | Heating capacity  | kW                | 6    |

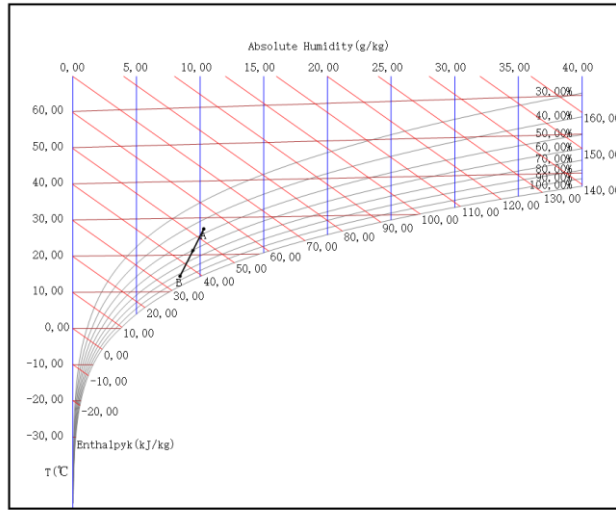
## Specifications MKH2-500-R3 (1)

| Unit model                |                   |              |                      |                   |         |
|---------------------------|-------------------|--------------|----------------------|-------------------|---------|
| MKH2-500-R3               |                   |              |                      |                   |         |
| Fan motor data            |                   |              |                      |                   |         |
| Type                      | 2nd Ceiling&Floor |              | Fan speed            |                   | High    |
| Quantity                  | 1                 |              | Air flow             | m <sup>3</sup> /h | 790     |
| Power supply              | 220-240/1/50      |              | ESP                  | Pa                | /       |
| Power input               | W                 | 91           | Rated current        | A                 | 0.4     |
| Cooling                   |                   |              |                      |                   |         |
| Inlet air temp (DB/WB)    | °C                | 27.0/19.0    | Total capacity       | kW                | 4.65    |
| Outlet air temp (DB/WB)   | °C                | 14.2/12.7    | Sensible capacity    | kW                | 3.58    |
| Inlet water temp          | °C                | 7.0          | Water flow           | m <sup>3</sup> /h | 0.80    |
| Outlet water temp         | °C                | 12.0         | Water pressure drop  | kPa               | 56.85   |
| Heating                   |                   |              |                      |                   |         |
| Inlet air temp (DB/WB)    | °C                | 20.0/15.0    | Heating capacity     | kW                | 6.95    |
| Outlet air temp (DB/WB)   | °C                | 45.9/23.3    | Water flow           | m <sup>3</sup> /h | 0.60    |
| Inlet water temp          | °C                | 55.0         | Water pressure drop  | kPa               | 23.37   |
| Outlet water temp         | °C                | 45.0         |                      |                   |         |
| Coil Data                 |                   |              | Water Pipe Diameter  |                   |         |
| Face area                 | m <sup>2</sup>    | 0.15         | Inlet pipe           | mm                | Gø19.1  |
| Tube diameter             | mm                | 7.94         | Outlet pipe          | mm                | Gø19.1  |
| Rows                      |                   | 3            | Drain pipe           | mm                | ODø18.5 |
| Body Dimensions           |                   |              | Panel Dimensions     |                   |         |
| Dimension (W*H*D)         | mm                | 495*200*1240 | Dimension (W*H*D)    | mm                | /       |
| Packing size (W*H*D)      | mm                | 595*300*1345 | Packing size (W*H*D) | mm                | /       |
| Net weight                | kg                | 25.50        | Net weight           | kg                | /       |
| Gross weight              | kg                | 32.00        | Gross weight         | kg                | /       |
| Sound Power Level Data    |                   |              | Electrical Heater    |                   |         |
| High/Medium/Low           | dB(A)             | 59/51/43     | Capacity             | kW                | /       |
| Sound Pressure Level Data |                   |              |                      |                   |         |
| High/Medium/Low           | dB(A)             | 59/51/43     |                      |                   |         |

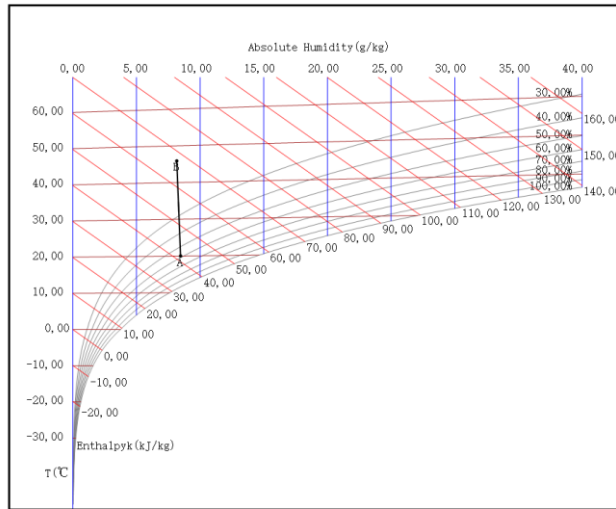
**Note:** Sound Power Level is tested in a reverberation chamber test room.

# Enthalpy-Humidity Chart

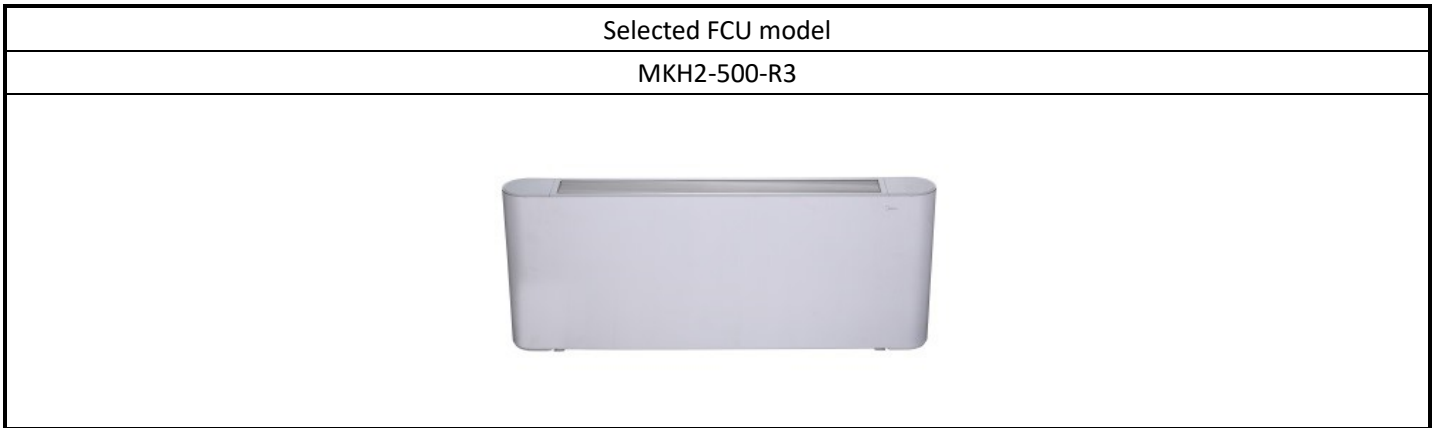
humidity chart of cooling



humidity chart of heating

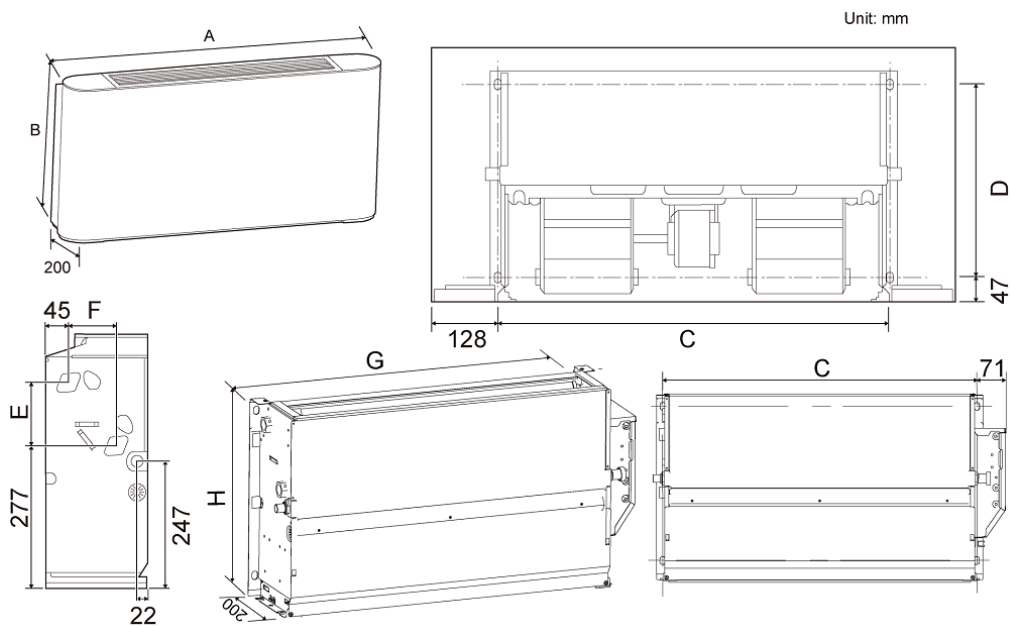


## Appearance



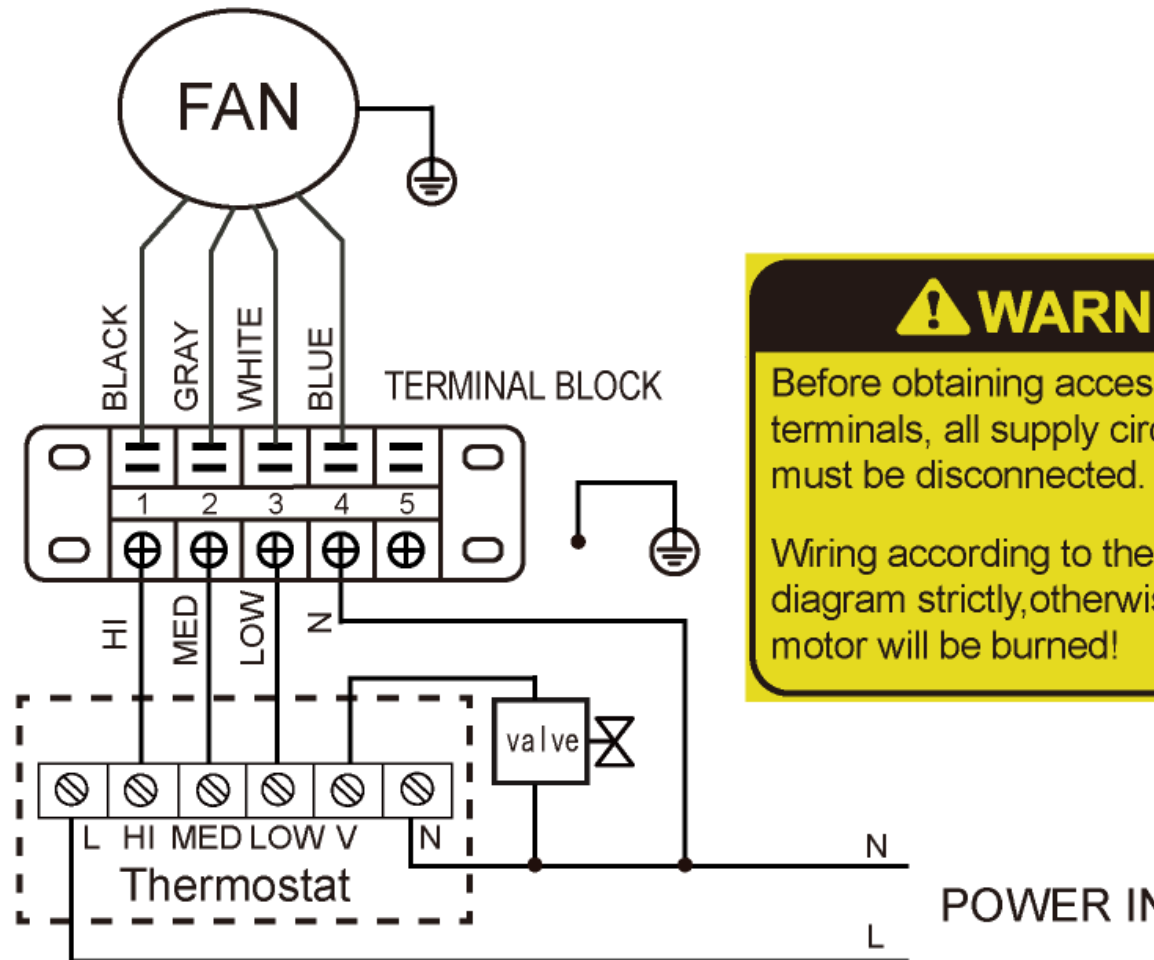
## Dimensions

(Unit: mm):MKH2-500-R3



| MODEL | MKH2-V150-R3(R4) | MKH2-V250-R3(R4) | MKH2-V350-R3(R4) | MKH2-V500-R3(R4) | MKH2-V700-R3(R4) | MKH2-V800-R3(R4) |
|-------|------------------|------------------|------------------|------------------|------------------|------------------|
| A     | 790              | 1020             | 1240             | 1240             | 1360             | 1360             |
| B     | 495              | 495              | 495              | 495              | 495              | 591              |
| C     | 534              | 764              | 984              | 984              | 1104             | 1104             |
| D     | 375              | 375              | 375              | 375              | 375              | 391              |
| E     | 123              | 123              | 123              | 123              | 123              | 219              |
| F     | 93               | 93               | 93               | 93               | 93               | 102              |
| G     | 628              | 858              | 1078             | 1078             | 1198             | 1198             |
| H     | 455              | 455              | 455              | 455              | 455              | 551              |

Wiring diagram



**! WARNING**

Before obtaining access to terminals, all supply circuits must be disconnected.

Wiring according to the diagram strictly, otherwise motor will be burned!



## FCU4

### Input Information

| General Data                   |                           |                   |                   |      |
|--------------------------------|---------------------------|-------------------|-------------------|------|
| Series                         | 2-Pipe FCU                | Electric heater   |                   | No   |
| Type                           | 2nd Ceiling&Floor         | Fan motor type    |                   | AC   |
| Product name                   | Air Return From Bottom H2 | Fan speed         |                   | High |
| Design according to            | Cooling mode Heating mode | Air flow          | m <sup>3</sup> /h | /    |
| Pipe connection direction      | /                         | ESP               | Pa                | /    |
| Antifreeze type                | None                      | Cooling capacity  | kW                | /    |
| Air volume deviation limit (%) | /                         | Sensible capacity | kW                | /    |
| Capacity deviation limit (%)   | 20                        | Heating capacity  | kW                | 7    |

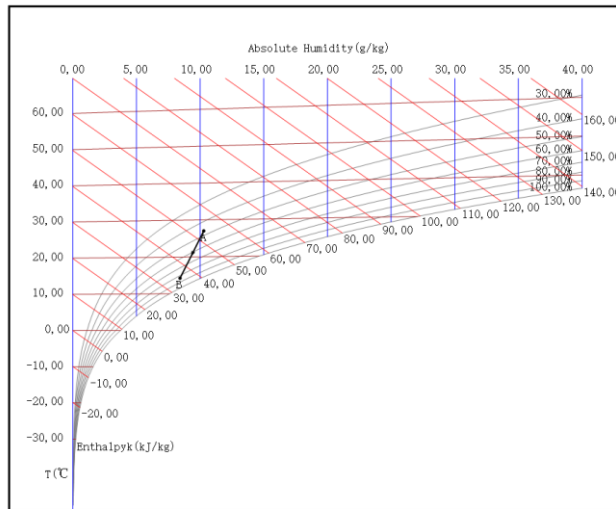
## Specifications MKH2-500-R3 (1)

| Unit model                |                   |              |                      |                   |         |
|---------------------------|-------------------|--------------|----------------------|-------------------|---------|
| MKH2-500-R3               |                   |              |                      |                   |         |
| Fan motor data            |                   |              |                      |                   |         |
| Type                      | 2nd Ceiling&Floor |              | Fan speed            |                   | High    |
| Quantity                  | 1                 |              | Air flow             | m <sup>3</sup> /h | 790     |
| Power supply              | 220-240/1/50      |              | ESP                  | Pa                | /       |
| Power input               | W                 | 91           | Rated current        | A                 | 0.4     |
| Cooling                   |                   |              |                      |                   |         |
| Inlet air temp (DB/WB)    | °C                | 27.0/19.0    | Total capacity       | kW                | 4.65    |
| Outlet air temp (DB/WB)   | °C                | 14.2/12.7    | Sensible capacity    | kW                | 3.58    |
| Inlet water temp          | °C                | 7.0          | Water flow           | m <sup>3</sup> /h | 0.80    |
| Outlet water temp         | °C                | 12.0         | Water pressure drop  | kPa               | 56.85   |
| Heating                   |                   |              |                      |                   |         |
| Inlet air temp (DB/WB)    | °C                | 20.0/15.0    | Heating capacity     | kW                | 8.14    |
| Outlet air temp (DB/WB)   | °C                | 50.3/24.4    | Water flow           | m <sup>3</sup> /h | 0.70    |
| Inlet water temp          | °C                | 60.0         | Water pressure drop  | kPa               | 30.19   |
| Outlet water temp         | °C                | 50.0         |                      |                   |         |
| Coil Data                 |                   |              | Water Pipe Diameter  |                   |         |
| Face area                 | m <sup>2</sup>    | 0.15         | Inlet pipe           | mm                | Gø19.1  |
| Tube diameter             | mm                | 7.94         | Outlet pipe          | mm                | Gø19.1  |
| Rows                      |                   | 3            | Drain pipe           | mm                | ODø18.5 |
| Body Dimensions           |                   |              | Panel Dimensions     |                   |         |
| Dimension (W*H*D)         | mm                | 495*200*1240 | Dimension (W*H*D)    | mm                | /       |
| Packing size (W*H*D)      | mm                | 595*300*1345 | Packing size (W*H*D) | mm                | /       |
| Net weight                | kg                | 25.50        | Net weight           | kg                | /       |
| Gross weight              | kg                | 32.00        | Gross weight         | kg                | /       |
| Sound Power Level Data    |                   |              | Electrical Heater    |                   |         |
| High/Medium/Low           | dB(A)             | 59/51/43     | Capacity             | kW                | /       |
| Sound Pressure Level Data |                   |              |                      |                   |         |
| High/Medium/Low           | dB(A)             | 59/51/43     |                      |                   |         |

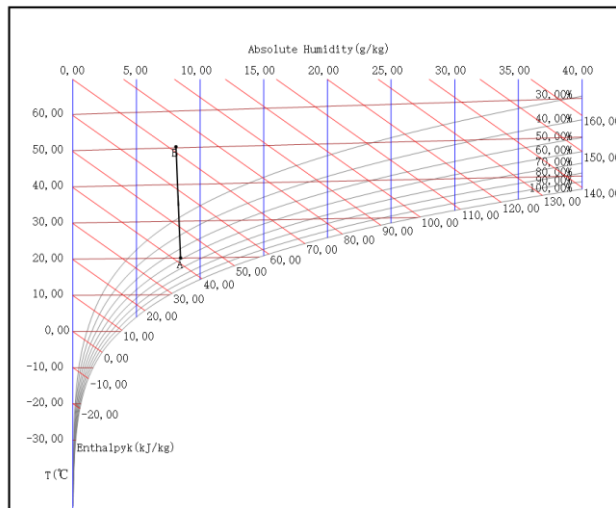
**Note:** Sound Power Level is tested in a reverberation chamber test room.

# Enthalpy-Humidity Chart

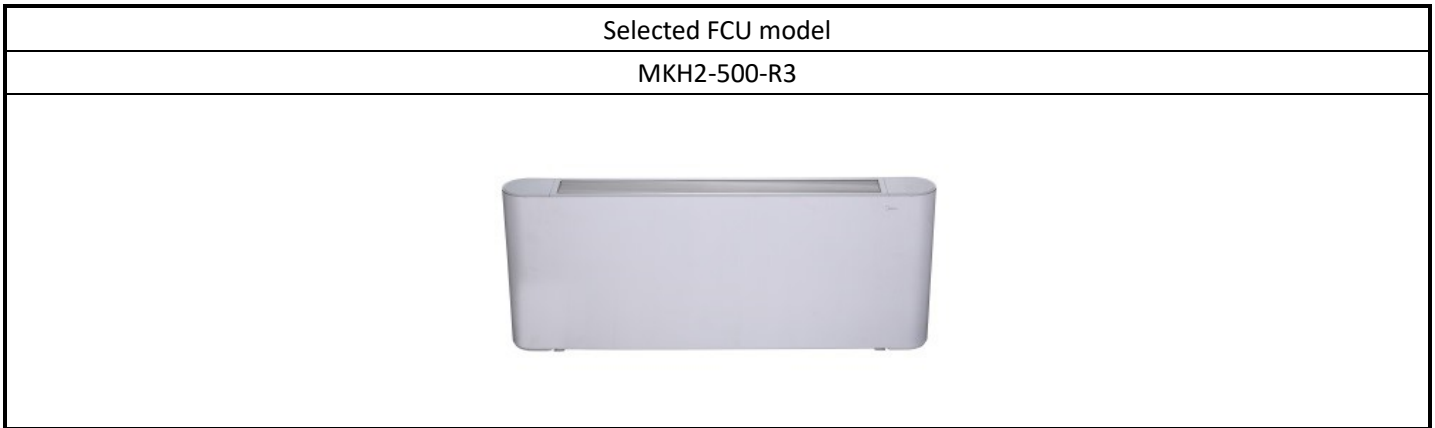
humidity chart of cooling



humidity chart of heating

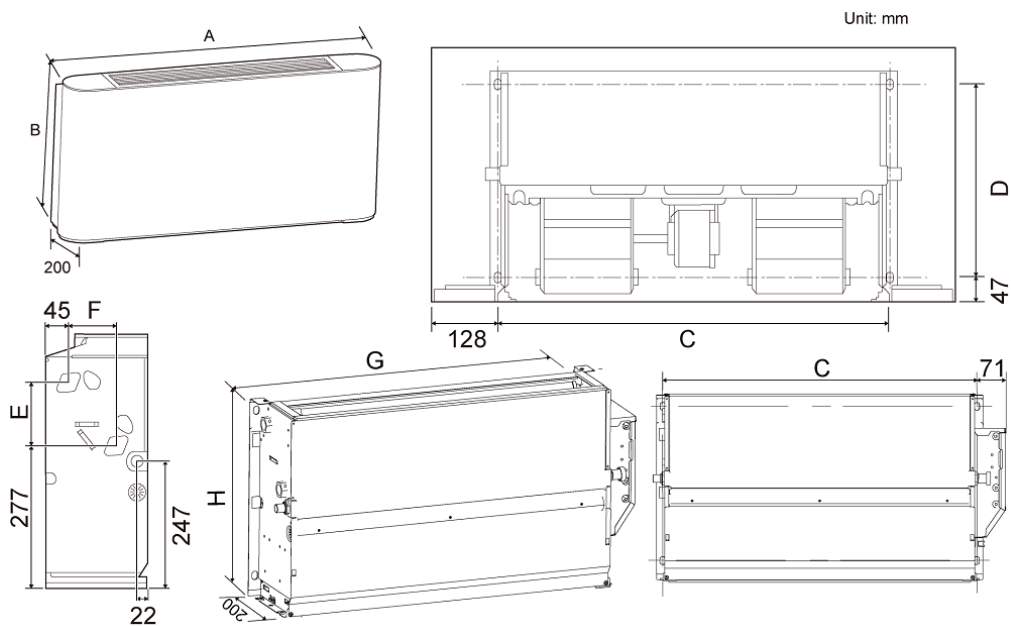


## Appearance



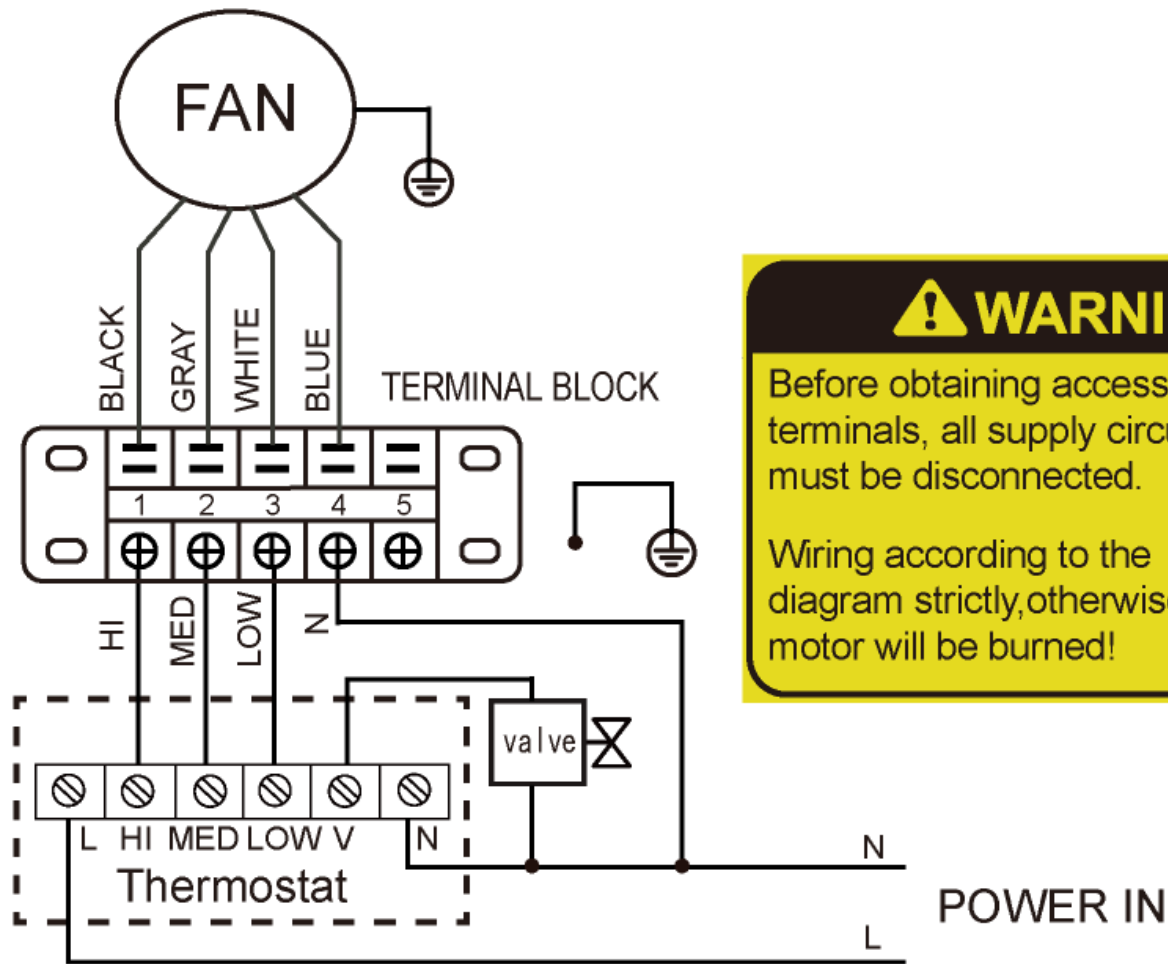
## Dimensions

(Unit: mm):MKH2-500-R3



| MODEL | MKH2-V150-R3(R4) | MKH2-V250-R3(R4) | MKH2-V350-R3(R4) | MKH2-V500-R3(R4) | MKH2-V700-R3(R4) | MKH2-V800-R3(R4) |
|-------|------------------|------------------|------------------|------------------|------------------|------------------|
| A     | 790              | 1020             | 1240             | 1240             | 1360             | 1360             |
| B     | 495              | 495              | 495              | 495              | 495              | 591              |
| C     | 534              | 764              | 984              | 984              | 1104             | 1104             |
| D     | 375              | 375              | 375              | 375              | 375              | 391              |
| E     | 123              | 123              | 123              | 123              | 123              | 219              |
| F     | 93               | 93               | 93               | 93               | 93               | 102              |
| G     | 628              | 858              | 1078             | 1078             | 1198             | 1198             |
| H     | 455              | 455              | 455              | 455              | 455              | 551              |

Wiring diagram



**! WARNING**

Before obtaining access to terminals, all supply circuits must be disconnected.

Wiring according to the diagram strictly, otherwise motor will be burned!

## FCU5

### Input Information

| General Data                   |                           |                   |                   |      |
|--------------------------------|---------------------------|-------------------|-------------------|------|
| Series                         | 2-Pipe FCU                | Electric heater   |                   | No   |
| Type                           | 2nd Ceiling&Floor         | Fan motor type    |                   | AC   |
| Product name                   | Air Return From Bottom H2 | Fan speed         |                   | High |
| Design according to            | Cooling mode Heating mode | Air flow          | m <sup>3</sup> /h | /    |
| Pipe connection direction      | /                         | ESP               | Pa                | /    |
| Antifreeze type                | None                      | Cooling capacity  | kW                | /    |
| Air volume deviation limit (%) | /                         | Sensible capacity | kW                | /    |
| Capacity deviation limit (%)   | 20                        | Heating capacity  | kW                | 8    |

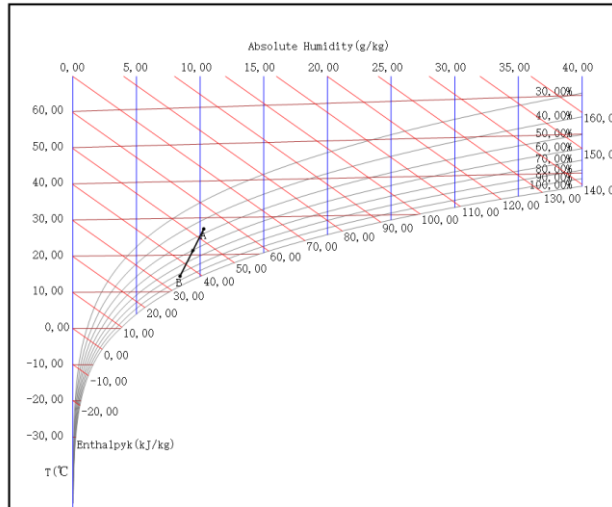
## Specifications MKH2-500-R3 (1)

| Unit model                |                   |              |                      |                   |         |
|---------------------------|-------------------|--------------|----------------------|-------------------|---------|
| MKH2-500-R3               |                   |              |                      |                   |         |
| Fan motor data            |                   |              |                      |                   |         |
| Type                      | 2nd Ceiling&Floor |              | Fan speed            |                   | High    |
| Quantity                  | 1                 |              | Air flow             | m <sup>3</sup> /h | 790     |
| Power supply              | 220-240/1/50      |              | ESP                  | Pa                | /       |
| Power input               | W                 | 91           | Rated current        | A                 | 0.4     |
| Cooling                   |                   |              |                      |                   |         |
| Inlet air temp (DB/WB)    | °C                | 27.0/19.0    | Total capacity       | kW                | 4.65    |
| Outlet air temp (DB/WB)   | °C                | 14.2/12.7    | Sensible capacity    | kW                | 3.58    |
| Inlet water temp          | °C                | 7.0          | Water flow           | m <sup>3</sup> /h | 0.80    |
| Outlet water temp         | °C                | 12.0         | Water pressure drop  | kPa               | 56.85   |
| Heating                   |                   |              |                      |                   |         |
| Inlet air temp (DB/WB)    | °C                | 20.0/15.0    | Heating capacity     | kW                | 9.32    |
| Outlet air temp (DB/WB)   | °C                | 54.7/25.5    | Water flow           | m <sup>3</sup> /h | 0.80    |
| Inlet water temp          | °C                | 65.0         | Water pressure drop  | kPa               | 37.69   |
| Outlet water temp         | °C                | 55.0         |                      |                   |         |
| Coil Data                 |                   |              | Water Pipe Diameter  |                   |         |
| Face area                 | m <sup>2</sup>    | 0.15         | Inlet pipe           | mm                | Gø19.1  |
| Tube diameter             | mm                | 7.94         | Outlet pipe          | mm                | Gø19.1  |
| Rows                      |                   | 3            | Drain pipe           | mm                | ODø18.5 |
| Body Dimensions           |                   |              | Panel Dimensions     |                   |         |
| Dimension (W*H*D)         | mm                | 495*200*1240 | Dimension (W*H*D)    | mm                | /       |
| Packing size (W*H*D)      | mm                | 595*300*1345 | Packing size (W*H*D) | mm                | /       |
| Net weight                | kg                | 25.50        | Net weight           | kg                | /       |
| Gross weight              | kg                | 32.00        | Gross weight         | kg                | /       |
| Sound Power Level Data    |                   |              | Electrical Heater    |                   |         |
| High/Medium/Low           | dB(A)             | 59/51/43     | Capacity             | kW                | /       |
| Sound Pressure Level Data |                   |              |                      |                   |         |
| High/Medium/Low           | dB(A)             | 59/51/43     |                      |                   |         |

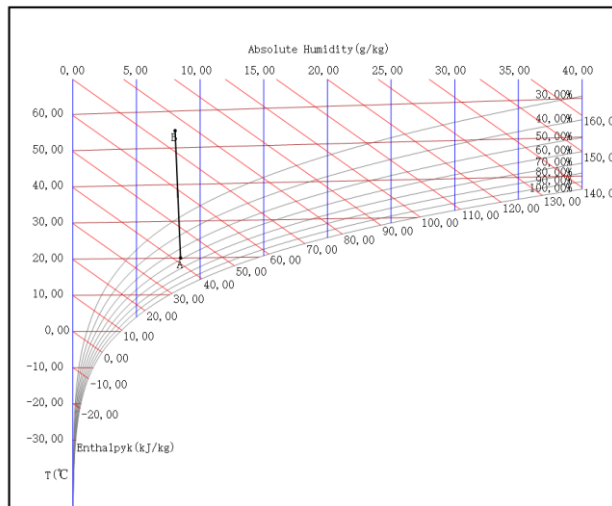
**Note:** Sound Power Level is tested in a reverberation chamber test room.

# Enthalpy-Humidity Chart

humidity chart of cooling

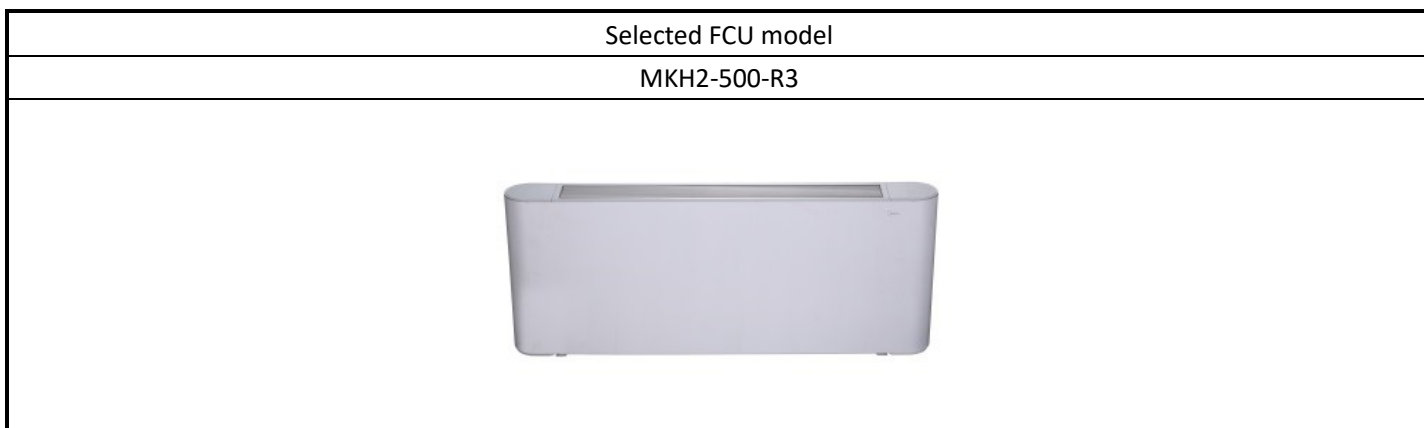


humidity chart of heating



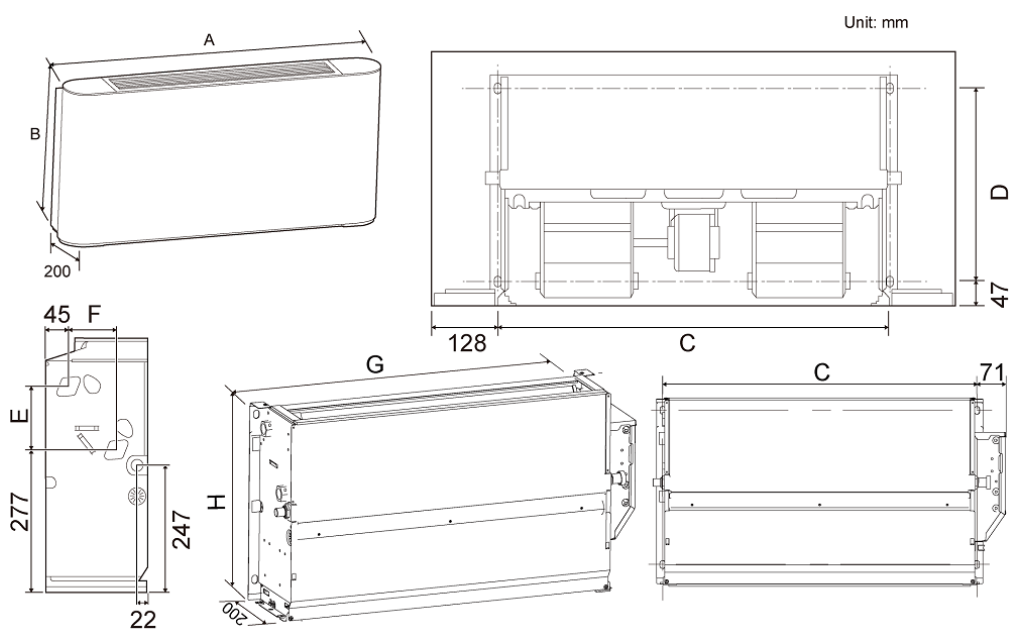


## Appearance



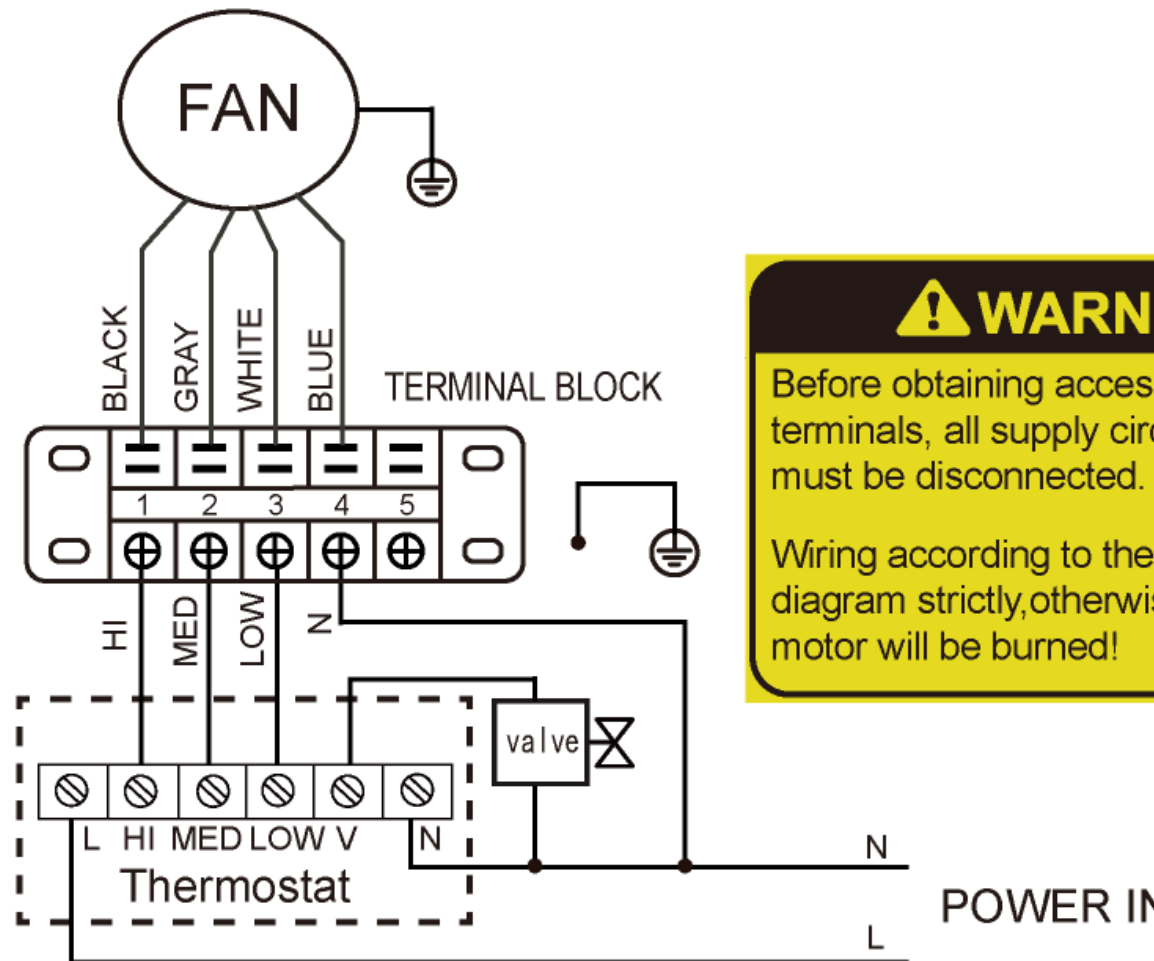
## Dimensions

(Unit: mm):MKH2-500-R3



| MODEL | MKH2-V150-R3(R4) | MKH2-V250-R3(R4) | MKH2-V350-R3(R4) | MKH2-V500-R3(R4) | MKH2-V700-R3(R4) | MKH2-V800-R3(R4) |
|-------|------------------|------------------|------------------|------------------|------------------|------------------|
| A     | 790              | 1020             | 1240             | 1240             | 1360             | 1360             |
| B     | 495              | 495              | 495              | 495              | 495              | 591              |
| C     | 534              | 764              | 984              | 984              | 1104             | 1104             |
| D     | 375              | 375              | 375              | 375              | 375              | 391              |
| E     | 123              | 123              | 123              | 123              | 123              | 219              |
| F     | 93               | 93               | 93               | 93               | 93               | 102              |
| G     | 628              | 858              | 1078             | 1078             | 1198             | 1198             |
| H     | 455              | 455              | 455              | 455              | 455              | 551              |

# Wiring diagram



**! WARNING**

Before obtaining access to terminals, all supply circuits must be disconnected.

Wiring according to the diagram strictly, otherwise motor will be burned!

This selection software is provided as a tool to aid project design. Responsibility for product selection remains with the user. Product selection should be based on project requirements and the latest product specifications.